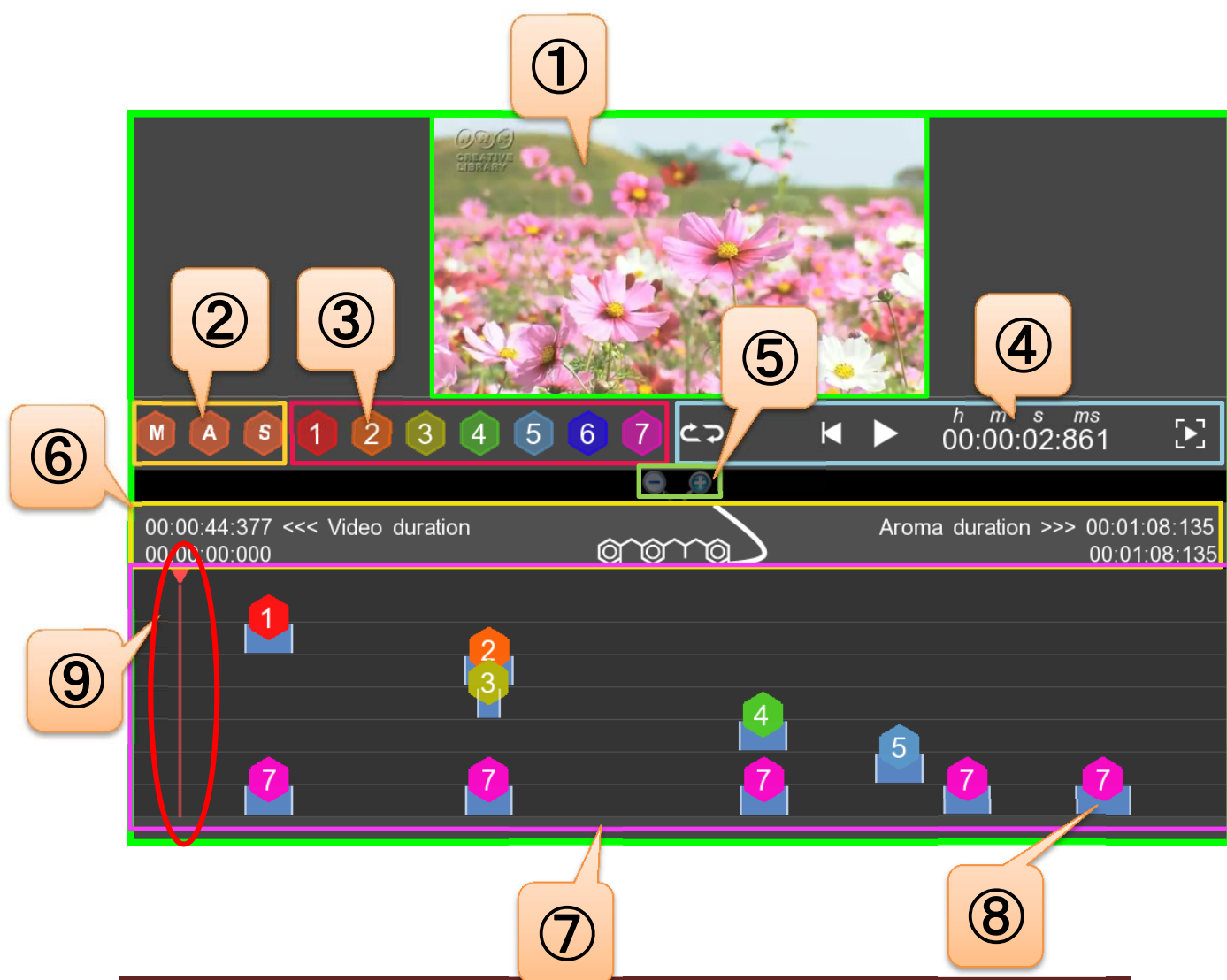


## 1. Before We Begin

AromaPlayer allows the synchronization and editing of the aroma and videos. It will allow you to easily match the aromas of your choice to the content of the video.

※This experience is only possible when used in conjunction with the Aroma Shooters sold at Aromajoin.

## 2. Description of the control system



The AromaPlayer is made up of eight control blocks (refer to figure above).  
Below, are the descriptions of each control blocks (①~⑧).

## ① Video Playback Screen.

The video being played will be displayed here.

## ② Data Control Icon

The Data Control Icon consists of three icons; [M] Cross-reference of Movie (video) Data or Music Data, [A] Cross-reference to Aroma Data, and [S] Save Aroma Data.

### ➤ [M] Cross-reference of Video Data Icon



You can import the Movie Data or Music Data by clicking on this icon.

### ➤ [A] Cross-reference to Aroma Data Icon



You can import the Aroma Data by clicking on this icon.

### ➤ [S] Save Aroma Data Icon



By clicking on this icon, and selecting a storage location, you can save the edited Aroma Data.

## ② Loading chamber [Aroma] number Icon



By dragging the Aroma Numbers (①~⑥) to the timeline, the aroma in を each loading chamber will be synced to the video.

Number 7 has no scent, and functions as a booster. The simulations use with other Aroma numbers, will increase the Shooting distance.

**※This simulations use of Number 7 and other Aroma numbers is strongly recommended.**

#### ④ Video Controller

➤ **Playback Icon**



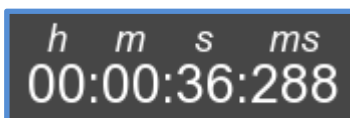
Click on this icon for video playback or continuous playback.

➤ **Control Icon**



Click on this icon for playing or rewinding the video.

➤ **Video Play Time**



The time will be displayed in Hours:

Seconds: Milliseconds.

➤ **Full Screen Icon**



Click on this icon for a playing the video in full screen mode.

#### ⑤ Scaling Icon



You can zoom in and out on the timeline display by pressing this icon while the video stopped.

## ⑥ Play Aroma Data

### ➤ Playing time of the Video Data

00:00:50:750 <<< Video duration

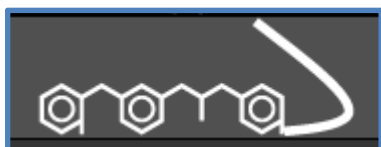
The playing time of the Video Data will be displayed.

### ➤ Playing time of the Aroma Data

Aroma duration >>> 00:01:02:187

The playing time of the Aroma Data will be displayed.

### ➤ aromajoin Logo



This is the Aromajoin Corporation logo.  
Click on this link to access our homepage.

## ⑦ Timeline



The Aroma Data will be displayed on the timeline.

The Aroma Data can be created by dropping the Aroma numbers onto the timeline. You can delete the Aroma number by right clicking the individual Aroma numbers displayed on the timeline. Furthermore, by right clicking

the edge of the shooting time bar (⑧) you can make detailed adjustments of the aroma shooting time.

The video playback line (⑨) is linked to the Video Playback Screen (①) and Video Controller (④), and it displays the time being played in the timeline.

※Aroma Data can be created without importing and Video Data.

### 3. How to Use

1. Connect the Aroma Shooter to your computer.



2. Open AromaPlayer application.

※The Aroma Shooter will not be recognized if you connect the device after opening the AromaPlayer application.



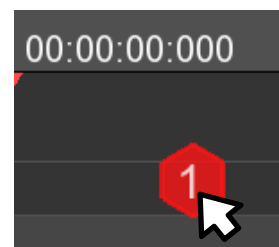
3. Import your video data by clicking on the [M] Cross-reference of Video Data Icon

※Continue to the next step if you are not going to import any Video Data.



4. Create your Aroma Data.

For further instructions please refer to the “Aroma Data Creation Tutorial” on the next page.

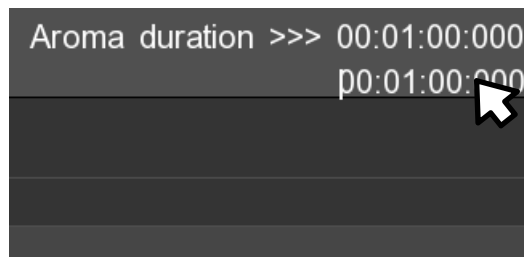


5. Save your Aroma Data by clicking on the [S] Save Aroma Data Icon.

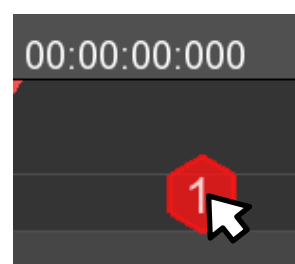


## 4. Aroma Data Creation Tutorial

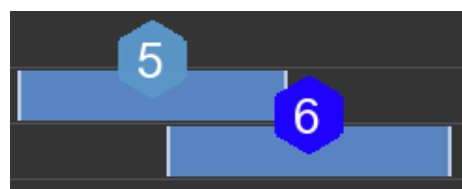
1. You can adjust the ending time of your Aroma Data by right of the timeline.



2. Drag and drop the loading chamber number of each respective aroma to the location on the timeline you wish to emit the aroma.



3. You can make adjustments of the tag by dragging the end of the shooting time bar of aroma number. The tag can be deleted by right-clicking the number of the tag.

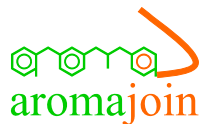


4. The shooting time can be typed in by right clicking the edge of the shooting time bar. Also, by using the Scaling Icon [⑤], you can make adjustments on the tag.

“d” represents the shooting duration, and “t” represents the time of the edge of the tag.







Change the World with Aroma!

## System Requirements

OS: Windows 7 or after

Memory space: 512MB or more

Ports: USB port

Supported video file formats:

- QuickTime Movie (.mov)
- MPEG-4 (.mp4, .m4v)
- MPEG-2 (OS X Lion or after)
- MPEG-1
- 3GPP
- 3GPP2
- AVCHD (OS X Mountain Lion or after)
- AVI (only Motion JPEG)
- DV

Supported music file formats:

- iTunes Audio (.m4a, .m4b, .m4p)
- MP3
- Core Audio (.caf)
- AIFF
- AU
- SD2
- WAV
- SND
- AMR

## Contact

For any inquiries regarding the AromaPlayer, Please contact Aromajoin Corporation Customer Support at TEL: +81-774-95-5088 or Email: support@aromajoin.com.

## Regarding the Handling of your Personal Information

Aromajoin Corporation will handle our customer's personal information in the following manner.

1. The Personal information provided through inquiries regarding repair, maintenance, construction work, and usage of the product will be used, not only for the purpose of product and service quality, but also to inform you the product information.
2. For this purpose, we may keep a record of the contents of your inquiries.
3. Unless given permission of the customer, or in the two cases exceptions written below, we will not provide or disclose personal information to third parties other than our company.
  - 1) In cases of outsourcing to Aromajoin Corporation group companies and partner companies for the purposes written above.
  - 2) If it is based on the provisions stipulated by laws and regulations.
4. Please contact the Customer Support Center you contacted for inquiries regarding personal information.